



Station House

STATION MASTER'S HOUSE

LIVING ROOM

Relax in front of the fire after a long day of sightseeing or take a day off and watch a movie in the cosy Station House living room.





YOU WILL FEEL RIGHT AT HOME

Guests will feel welcome in this lovely historic home. Rooms have been thoughtfully renovated for comfort, warmth, and style. Whether you are staying long or short-term at Station House, you will feel at ease, relaxed, and well-taken care of.

Station House is conveniently located near the Dublin-Athenry-Galway rail line. You don't need a car to get here! In less than 15 minutes, you can be in the center of Galway where shops, theatres, pubs, and entertainment await. Enjoy Athenry's offerings, too. Visit our village castle, one of the finest 13th-century castles remaining in Ireland. Browse the charming shops of Athenry, wander the twisting medieval streets, and stop in for a Guinness and Irish music at one of the town pubs. Food shops, restaurants, and convenience stores are just a few minutes walk from Station House.







BEDROOMS

Station House sleeps up to 12 guests. There are three bedrooms with four double beds, two single beds, and one fold-down double bed, if needed. Linens are provided.

KITCHEN

The kitchen is fitted with all modern conveniences and is large enough for group gatherings and family meals.

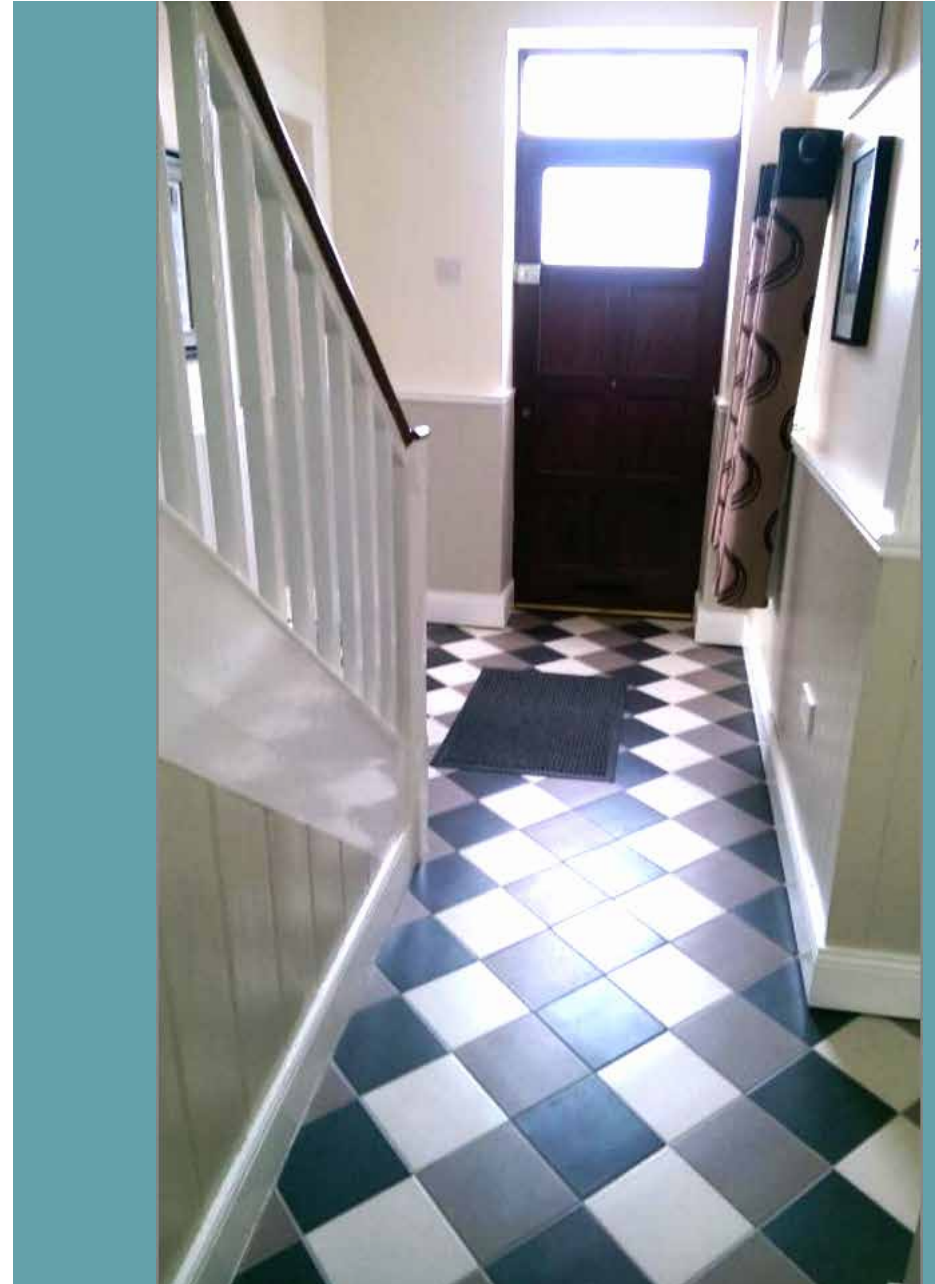
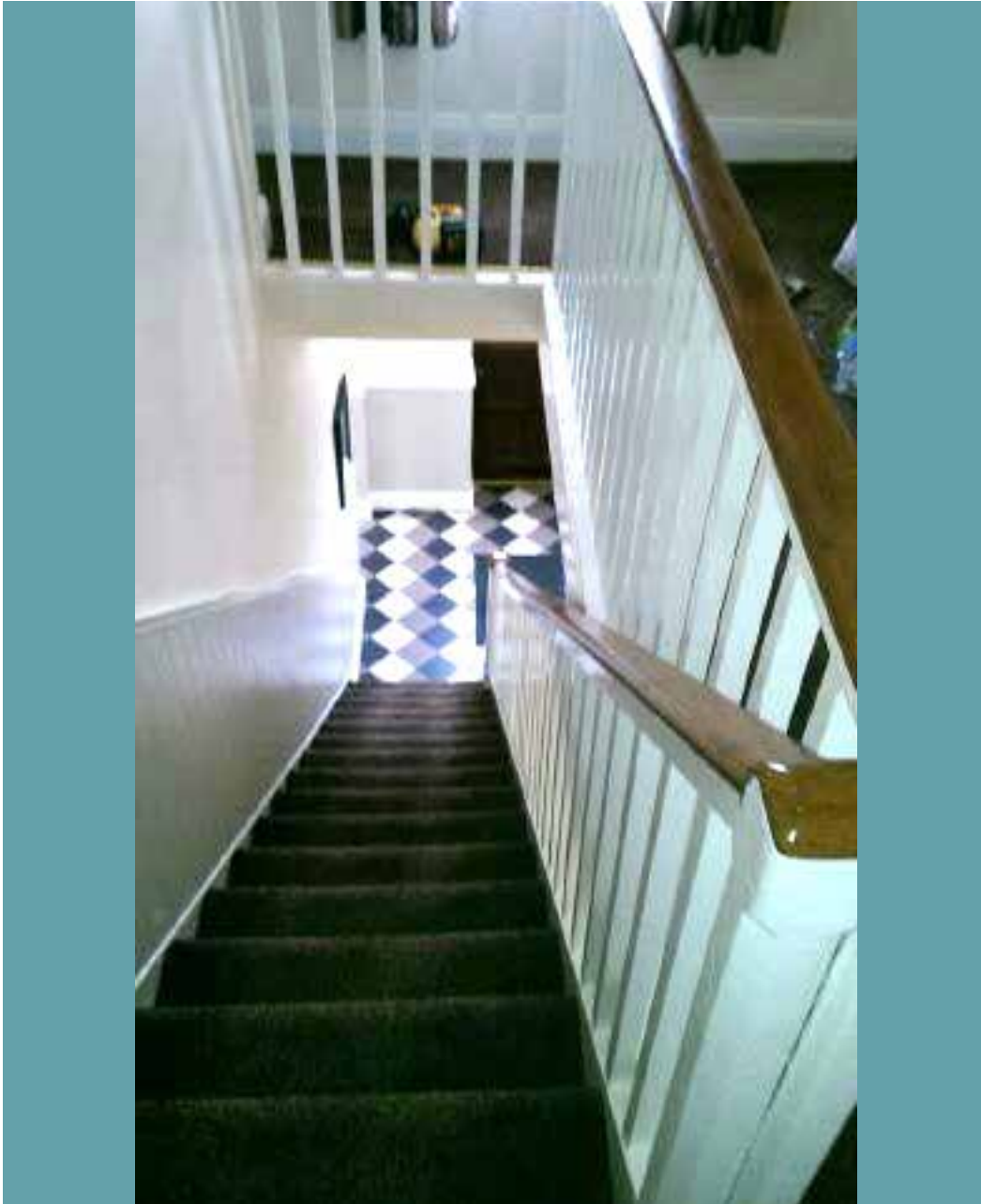
A washer and dryer is provided for guest convenience.



MODERN BATHROOMS

Station House has two large modern bathrooms renovated to the highest standards.

Towels and soaps are provided for our guests.



CONTACT US



Ray McGrogan
Banba House
New Line Rd
Athenry, Galway Ireland



+ 353 87 2585378
(local) 087 2585378



banbahouse@gmail.com



www.banbahouse.com

